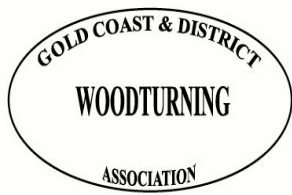


Gold Coast and District Woodturning Assoc. Inc.  
P.O. Box 965, Mudgeeraba Qld 4213  
Website: [www.gcwoodturners.com.au](http://www.gcwoodturners.com.au)



# Newsletter

## August 2008

### Editors Report

Mike and I are back from our gallivanting around the world and I would like to thank Linton and Kerrie Allen for the wonderful job they did as Editor and assistant while I was away.

As you will see in this newsletter the main focus is on the Gold Coast Show. As this is our major event of the year it would be great if all of you could have some input in some way e.g. placing entries, helping out over the weekend or coming and give us support.

I am also looking for contributions to the newsletter as you know better than I want sort of articles you wish to see in your WOODTURNERS newsletter. You will see on page 2 a newspa-

per article about Ken Ellis which was provided by Ron Ryan which will be of interest to all of you as Ken Ellis Day is an important part of our calendar.

Also, on page 3 is a photo provided by Grace Cornwall of the opening of our new Clubhouse.

Good luck to everyone entering works of art in the Gold Coast Show.

Representatives from Redcliffe Woodturners club will be judges this year and they will be using their clubs judging rules.

Please read on page 4 some things you need to know about the upcoming Gold Coast Show.

### Gold Coast Show by Clive Woodgate

For the Gold Coast Show we hope to be doing things differently and we would like some feedback

Firstly, we would like a variety of past open winners items or any item of interest to be displayed over the weekend.

Secondly, we hope to have extra floor space so that we can have A TV which will have an audio visual display of woodturning. There will be chairs for people to sit on and microphones for demonstrators..

If you have any other ideas, please let Graham, Vince or myself know as soon as possible.

Please place your name on the list on the board if you are willing to help out either setting up or closing down, demonstrating or generally helping out over the weekend.

It would be great if we could see most of our members putting entries into the show as it is the most important event of the year in that we are able to show the public the Gold Coast Woodies skills and mateship.

Come on now, lets have a go.

### Deadlines

Deadline for articles for the next newsletter is noon **Monday 8 September 2008**. Please either send articles via email to [woodturners@aanet.com.au](mailto:woodturners@aanet.com.au) or leave in the club office addressed to the Editor, for collection.

**Please Note:** No articles will be accepted after the above date.

### Coming Events

#### August

##### Sat 16

General Meeting  
Demonstration (Jigalong)  
and BBQ

##### Fri 29–Sun 31

Gold Coast Show

#### September

##### Sat 20

General Meeting  
Demonstration and BBQ

#### October

##### Sat 18

General Meeting  
Demonstration and BBQ

##### Sat 25

Greenslopes Demonstration  
by Ray Lanham from  
the USA

#### November

##### Saturday 15

General Meeting  
Demonstration and BBQ

### Hands On

#### Monday

6.30pm–9.00 pm  
(beginners)

#### Tuesday

8.00am–3.00 pm

#### Wednesday

6.30pm–9.00pm

#### Thursday

8.00am–12.30pm

#### Saturday

First of each month  
1-5 p.m.

### Meetings

1st Thursday of the month  
7.00pm

(Committee)

3rd Saturday of the month

8.30am (General)

## A couple of craftsmen always on the scrounge

WHEN Ken Ellis spies a chunk of wood or a dead tree, he sees a potential work of art.

Giving credence to the saying, 'One man's trash is another man's treasure', Ken collects any pieces of wood — dead or alive — that he can get his hands on.

He is a member of the Gold Coast and District Wood-turning Association, which began exhibiting at the annual show only last year.

He said wood-turners were always on the lookout for pieces of wood to transform into bowls, lamp bases, jars or mirror frames.

"People ring up and say they've got a tree to get rid of and ask if you want it," he said. "I just got some from Beechmont where people were cutting down trees under a power line."

Ken declares 'there's no such thing as bad timber', but says some types are better to turn than others. "I like rosewood," he said. "It's beautiful stuff to work with and has a close grain. Iron bark's a bit hard."

Grainy timbers from banana plants and papaw trees are too fibrous. So are umbrella trees.

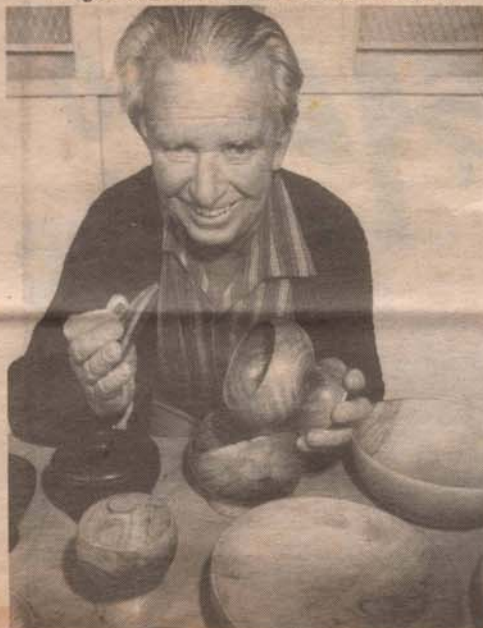
Ken has a collection of 32 wooden cups made from the same number of different timbers including oak, jacaranda, mango, rosewood and camphor laurel. And he increases the number of different timbers each year.

Also a keen wood-turner is association chairman Alan Cruickshank, who is midway through making 100 wooden lace bobbins for a special order.

He said the demand for wooden items followed the trend back to old-fashioned crafts. That included tools such as lace bobbins as well as French knitting bobbins.

"The last tree I got was a black wattle tree from up near the Tulip Farm," he said.

"We get wood from wherever we can scrounge it."



Ken Ellis of Tugun has 32 mugs made from different timbers in his collection of woodwork

Page 26 — GOLD COAST BULLETIN, Tuesday, September 1, 1987

# ??

A bit of a difference with this month's demonstration.

As you all know, Bruce MacDougall was a great one for making his own turning tools and jigs. Little did Bruce realise that his legacy would become a mystery in that some of the jigs he has made are a bit of a mystery.

So the challenge is to try and solve the puzzle, of the jigs which will be made available on the day for everyone to guess their purpose.

As Bruce was one of our most talented wood-turners, making very intricate objects of art it will be a challenge for you all.

Another change for this month is instead of sausages, hamburgers will be made for all to enjoy.

Don't forget to bring a plate (with food on it) for morning tea. The reason I have stipulated the food part is that last time I wrote this, one Bruce MacDougall brought a wooden plate with wooden mince pies on it. Typical of his sense of humour.

## September Competition

We have decided to try again with the monthly competition. We will try and keep it interesting and doable for all members. You and your fellow members will judge the items at the General Meeting each month. There is no judging criteria except that it must please the voting member for whatever reason.

I hope that more than the usual group enter this time. There are only eight months over the next year that the competition runs so not much for you to do.

For the September meeting the challenge is for a **face plate item no bigger than 10 cm.**

Don't forget that the item must have been made within the month between competitions.

Winners will be announced each month but the total points will be a surprise until announced on Ken Ellis Day when a presentation will be made.

# Entry Form for Gold Coast Show

## WOODTURNING

CLASS	EXHIBIT	ENTRY FEE

**FEEES MUST ACCOMPANY AND BE PAID BY CASH, CHEQUE, POSTAL NOTE OR MONEY ORDER TO:  
GOLD COAST SHOW SOCIETY INC. PO BOX 204 SOUTHPORT QLD 4215  
PLEASE READ INSTRUCTIONS, RULES AND INFORMATION.  
ABOVE ENTRIES ARE SUBJECT TO ALL THE SOCIETYS RULES AND REGULATIONS**

### EXHIBITORS

NAME: \_\_\_\_\_

ADDRESS: \_\_\_\_\_

POST CODE: \_\_\_\_\_ PHONE: \_\_\_\_\_

DATE: \_\_\_\_\_ SIGNATURE: \_\_\_\_\_

**IF A RECEIPT IS REQUIRED, PLEASE SEND A STAMPED ADDRESSED ENVELOPE**

## Club Opening

I would like to thank Grace Cornwall for sending this photo for publication in the Newsletter.

Grace wrote that the new Club House was opened about April, May 1993 just after John Franklin was killed—hence his wife Myrna doing the honours.

Thank you Grace

Of course Bruce is easy to identify but we have our suspicions about the man shaking hands with Myrna and no idea about the man sitting down.

Do you have any idea who they are? If so put Mike and I out of our misery.



## Mudgeeraba Show by Clive Woodgate

First up I would like to thank all members who entered their works of art in the show. It was a great effort. The standard of workmanship was good.

Congratulations to Bob Dickerson who for the second year in a row took out "Best in Show" and to all the other winner. To those who missed out try again at the Gold Coast Show as there were some entries who only missed out by 1 or 2 points and with different judges you could be successful this time around Don't be disheartened and have another go.

Thanks to the judges, Rob McKee and Don Bridges who did a great job as well as providing written reports which meant that participants could see where they did well and where they could improve.

Thanks also to our demonstrators, Ian Buckberry, Ron Quickendon, Peter Poulton, Clive Woodgate and of course Kevin Petersen, who did a great job in keeping the public entertained. It's amazing where Kevin gets his energy from being a man of 89 years young. Hope you don't mind everyone knowing

your age. You are a credit to the club mate.

Thanks also to those who helped set up and pack up and gave their time over the Show Days. Everything went like clockwork.

On behalf of Graham Braund, Vince Wright and myself, being Stewards for the first time, we would like to thank all those who helped us as it made things a lot easier.

Below is a list of winners.

## Mudgeeraba Show Results

### Novice

#### Face Place

1. Nassar Rababi
2. Jim South

#### Combination

1. Jim Hansen
2. Brendan Butler

#### Spindle

James Richie

### Improvers

#### Face Plate

1. Ron Ryan
- =2 Harry Anstey, Howard Benstead

#### Combination

1. Ron Ryan
- =2. Edward Smith, Vince Wright

#### Spindle

1. Vince Wright
2. Edward Smith

### Open

#### Face Plate

1. Bob Dickerson
2. Clive Woodgate

#### Spindle

1. Clive Woodgate
2. David Hallett

#### Combination

1. Des Kurz
2. Kevin Petersen

#### Open Champion

Bob Dickerson

## Additional Information about the Gold Coast Show

### ENTRY CUT OFF TIMES

No Show entries will be accepted after 12.00 noon on Thursday, 28 August. There will be **NO** exceptions to this rule.

### SHOW SALES

There is limited space for show sales for those members wishing to sell their masterpieces. Each seller is entitled to equal space so please be considerate by only putting a few items on sale table at a time. Once an item is sold you may replace it with another. Not every-

one will need a lot of space but they are certainly entitled to it. Stewards will have the final say.

As usual, only members rostered on at any time at the show for the good of the club will be able to sell their wares.

## New Members

The following membership applications were accepted at the March Committee Meeting:

Hugh Mackay  
Nicholas Streefkerk

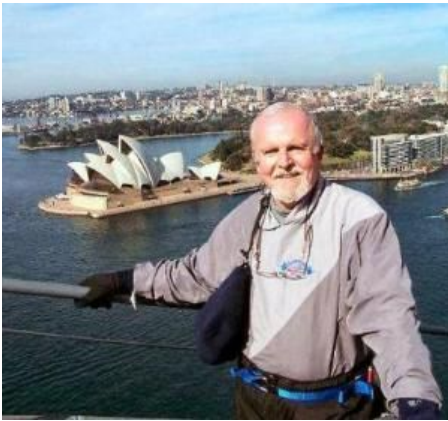
We welcome new members and hope your association will be enjoyable and rewarding . That is what

## Demonstration by Ray Lanham at Greenslopes

We have found out that Ray Lanham is demonstrating at Greenslopes on 25 October, 2008 for a full day. Ray is a turner from the USA and his speciality is making Wooden Hats. This is sure to be a good day so contact the Queensland Woodturning Society.

6 or so seats have been kindly reserved for us so contact Mike McGee on 55907822 to get a spot. The demonstration will start at 9.00am and finish at 4.00pm The cost will be around \$25.00 Or a bit less and that includes a BBQ lunch and a chance to meet up with our compatriots at Greenslopes.

The address of the Club is 19 Pine St, Greenslopes



Ray Lanham visits Sydney

I have included some information from Ray Lanham's website <http://www.coeur-de-larbre.com> and I encourage you to have a look.

### Coeur de l'Arbre (Heart of the Tree)

Thank you for visiting Coeur de l'Arbre. As a wood artist, my goal is to provide the viewer with an opportunity to explore the beauty and creativity that segmented turning can offer. This method of construction not only minimizes and conserves the amount of timber that is needed to create wood art; but, as you will see, it allows the creation of art that can literally touch your soul.

My goal is to present you with an entire spectrum of turnings as soon as possible, with an emphasis on the beauty that is uniquely wood. If wood art intrigues you, please check back often.

If you're a beginning woodturner or a seasoned professional, I look forward to exploring with you the art of compound-stave and other segmented vessel construction. Projects are available with step by step instructions, and the necessary software that will help you learn and then perfect your skills in using this method of turning. Check my "Projects" page and you'll see what I mean.



Snowy River by Ray Lanham



Texas State Fair by Ray Lanham

## Jokes of the month

Due to inherit a furniture factory when his sickly, widower father died, Clyde decided he needed a woman to enjoy it with. Going to a singles' bar, he spotted a woman whose beauty took his breath away. "I'm only an ordinary man," he said, walking up to her, "But in just a week or two, my father will die and I'll inherit a 20 million dollar business." The woman went home with Clyde, and the next day she became his stepmother.

Luigi, a perpetual bachelor, owned one of the biggest and fastest-growing businesses in the Gold Coast, a furniture manufacturing shop. Friends convinced him that he needed to take a trip to Italy to check out the latest trends there, and maybe he could meet an available young Italian woman at the same time. As he was checking into a hotel he struck up an acquaintance with a beautiful young lady. She only spoke Italian and he only spoke English-neither understood a word the other spoke. So he took out a pencil and a notebook and drew a picture of a taxi. She smiled, nodded her head and they

went for a ride in the park.

Later, he drew a picture of a table in a restaurant with a question mark and she nodded. So they went to dinner. After dinner he sketched two dancers and she was delighted. They went to several nightclubs, drank champagne, danced and had a glorious evening. It had gotten quite late when she motioned for the pencil and drew a picture of a four-poster bed. He was dumbfounded. To this day he says that he's never been able to understand how she knew he was in the furniture manufacturing business.

## Minutes from the July General Meeting

Proposed Minutes for 19<sup>th</sup> June 2008 gold Coast and District Woodturner Assoc. Inc., meeting opened at 8:33 by Nigel Rose.

Apologies: Eddy Smith, Linton Allen, Jackie McGee and Mike McGee.

Nigel Rose told the meeting of his intention to resign from the President position due to his business workload and unable to devote the time required continuing with the Presidents position. Announced at the July committee meeting to take effect at the completion of July's General Meeting. Bill Egan is going to take over the position until the next Annual General Meeting.

Anne Williamson told meeting how Nigel was a quite achiever and thanked him for all he had done during his presidency.

Secretary Report: Minutes presented for the meeting held on 22<sup>nd</sup> June 2008, second Anne Williamson, carried.

Correspondence In: Origin and Telstra Account, Margaret May, Norm Wilson, Nigel Rose, Bunnings and ING Statement.

Newsletters: Bribe Shavings, West Auckland Guild, Hobby Turner and Toowoomba Wood News

Email: Copy Lathe Goodings Timber, Silky Oak timber.

Business arising: The large Jet dust

collector is too big for the roof area. Nigel suggests that we purchase two of the next size down units. Discussion took place about the size of the units and there suitability for the workshop area. Anne Williamson suggested that the club purchase two of these units for the shed.

General Business: The new Band saw is up and running and has restrictions on operators and timber to be cut. The old Rexion band saw was sold for \$140.00.

A question about the, disposal of the old band saw was asked, "what was the procedure for its sale"?

The answer was, "the committee decided on the sale, the committee is able to do this as part of day to day running of the club as in the constitution."

A motion was tabled by Clive Woodgate, "That sale of surplus club equipment be offered for tender to members and sold subject to reaching reserve price." Second by Allen Hartley, motion carried.

Bill Pennell displayed the vacuum attachment purchased from Godfreys for dust collection at a cost of \$39.00. It was suggested we purchase one of these units to trail on a vacuum.

Clive requested for the following for the Gold Coast show to make steward's work easier for set-up.

Entrants place entry fees in a sealed envelope with entry form.

Show society suggests that we change our display for the show to the theme of the show for that year.

Check out availability of power for video unit at the show.

A notice for Gold Coast Show entries required.

He also gave a thank-you to all entries and displays in the Mudgeeraba Show.

Ron Quickenden issued a request for more demonstrators as he felt there was a high standard in the novice and intermediate entries.

On 26<sup>th</sup> and 27<sup>th</sup> July Pimpama Restoration Society Day and club membership application forms required.

Bruce MacDougall's timber is all labelled and is for sale at a purchase price of a gold coin.

There is a problem with the clip lock roof and does need to have sections repaired or replaced.

Allan Hartley asked if the other clubs who use the building are up to date with their rent payments.

Harry Anstey that he still has several books of tickets to sell, and request some assistance to sell the tickets.

Meeting closed at 9:35 a.m.

## For Sale

### Woodlathe

Phone 5578 3378 for further information.

**Club Shirts**—To place an order give size and \$10 deposit to Club Secretary.

### THE WOODIES SHOP

Have you found that you need woodturning consumables on club day? Did you know that the club has a shop where you can stock up on popular

items. The Store Manager is Bill Egan and all Tutors have a key to the Store Room.

For sale are the following items:

- Power sanding pads of various sizes (Ray Henley specials)
- Sanding sealer
- End sealer
- Croda (60%)
- EEE polish

- Special friction polish from the Peninsula club
- 50mm cloth-backed Sandpaper (Klingspore brand) in the following grits:  
120, 180, 240, 320, 400 and 600.

**NOTE:** All members are free to advertise in this space but the Editor needs to be notified each month if you wish to re-advertise.

## Position Holders—2007/2008

Patrons:	Ian Morris and Jim Stoner	
President:	Bill Egan	5500 4765
Vice-President:	Vacant	
Secretary:	John Meikle	5572 1840
Treasurer:	David Hallet	5529 7977
Committee:	Edward Smith	5574 7764
	Mike McGee	5590 7822
	Jackie McGee	5590 7822
	Peter Poulton	5520 3921
	Terry Dewley	5530 7976
Grants	Mike McGee	5590 7822
Welfare Officers:	Jim Stoner (North)	5577 1068
	Harry Anstey (South)	5534 8553
Membership Officer:	Harry Anstey	5534 8553
Stores Controller:	Bill Egan	5500 4765
Librarian:	Peter Poulton	5520 3921
Newsletter Editor:	Jackie McGee	5590 7822
	editor@gcwoodturners.com.au	
Maintenance/Equipment:	Graham Braund	5537 3462
Shirts, aprons:	Bill Egan	5500 4765
Key Register:	David Hallett	5529 7977
Showcase:	Alex Simpson	5522 0665
First Aid/Safety Officer:	Des Kurz	5530 5703
	Mike McGee	5590 7822
Tutors— Monday	Mike McGee	5590 7822
Tuesday	Bill Egan	5500 4765
Thursday	Graham Braund	5537 3462
Wednesday	Ray Mahoney	5535 2489

Phone in clubhouse—for emergencies only:

5530 2300

## Links to other Woodturning Websites

We receive quite a few paper copies of Newsletters from other Clubs which are available in our Library. Here are some links for you to access other Clubs on line. You can usually see newsletters from current to archive copies so you can have a chance to read up on Tips & Tricks, Demos and what other woodturners are doing. This time we will visit some Australian Sites.

### **Sydney Woodturners groups:**

[www.sydneywoodturners.com.au](http://www.sydneywoodturners.com.au)

### **Manningham, Vic. Woodworkers**

[www.woodcraft-manningham.org.au/](http://www.woodcraft-manningham.org.au/)

### **Victorian Woodworkers Association**

[www.vwa.org.au/](http://www.vwa.org.au/)

### **Knox and District Woodworkers Club, Ferntree Gully, Vic.**

[www.alchester.com.au/kdwc/](http://www.alchester.com.au/kdwc/)

### **Waverley Woodworkers Inc., Mount Waverley, Vic.**

[www.waverleywoodworkers.org.au](http://www.waverleywoodworkers.org.au)

Just a few to get you started.

If undelivered please return to:

Gold Coast and District  
Woodturning Assoc. Inc.  
P.O. Box 965, Mudgeeraba  
Qld 4213

President: Nigel Rose

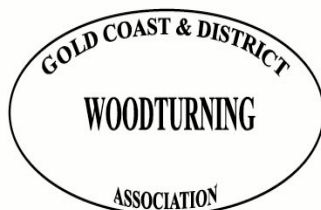
Vice President: Bill Egan

Secretary: John Meikel

Treasurer: David Hallett

Editor: Jackie McGee/Linton Allen

woodturners@aanet.com.au



**Membership Subscriptions:**

February to January \$30.00 per annum  
plus \$15.00 joining fee.

Pro rata subscriptions available to new  
member joining during the year.



**Colour Copy Shop**

**NotJustACopyShop.com**

Colour photo reproductions – Digital photos on canvas –  
Black & White photocopying – Posters designed & printed  
– Laminating – Book & Résumé binding – Builders plans  
copies – Full gloss colour photo enlargements – Fax &  
Internet services

2/87 Minjunbal Dr, Tweed Heads South

(opposite Toyworld & Red Rooster

Ph:- (07) 5523 2008. E:- colourcopyshop@optusnet.com.au



*Accountants & Tax Agents  
with a difference!*

**Elisabeth Schühle**

Senior Tax Accountant  
CEO

Suite 2, Ground Floor  
3 Short Street, Southport  
Qld 4215 Australia

Tel: +61 7 55 328 122  
Fax: +61 7 55 328 177  
Email: aaaom@austarnet.com.au